

# Specifications

## LE 15 GT



### PERFORMANCE

Working height, max.	14,70 m
Horizontal outreach with 200 kg	7,60 m
Up and Over Clearance, max.	5,40 m
Basket capacity	200 kg
Movable jib	-
Turret rotation	355°
To be jacked up on ground slope of	13°/23,0 %
Height and width track adjustment	12/18 cm*
Gradeability, max.	16,7°/30,0 %
Slope angle	16,7°/30,0 %
Travel speed	1,0 km/h

### MEASUREMENTS

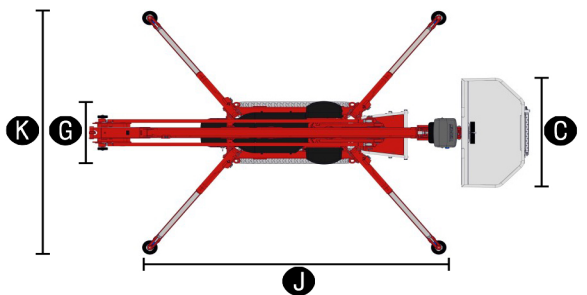
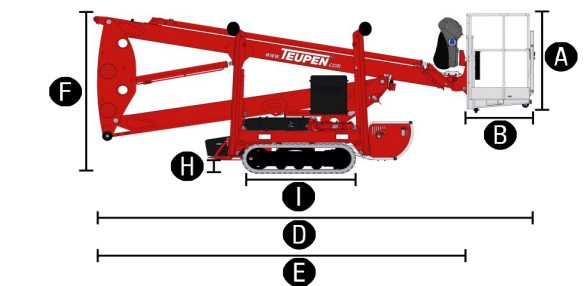
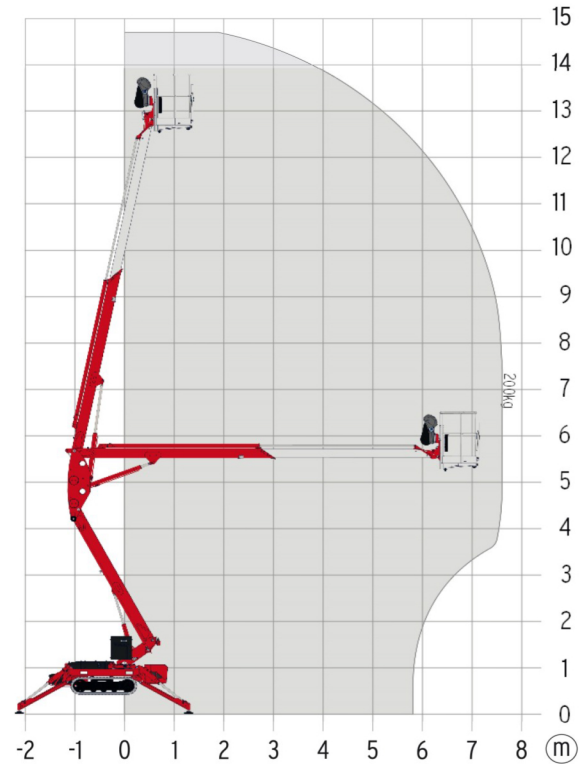
Platform height (A)	1,10 m
Platform length (B)	0,70 m
Platform width (C)	1,40 m
Length, overall (D)	5,25 m
Length without basket (E)	4,52 m
Height, travel position (F)	1,99 m
Width, minimal overall width (G)	0,78 m
Ground clearance, max. (H)	0,42 m
Track (L x W) (I)	133 x 18 cm
Length outrigger footprint, max. (J)	3,61 m
Width outrigger footprint, max. (K)	3,15 m
Outrigger plate Ø	0,18 m

### WEIGHT

Total weight	1780 kg
Live load in travelling position	4,63 kN/m <sup>2</sup>
Live load in working position	1,96 kN/m <sup>2</sup>
Point load per outrigger plate, max.	12,80 kN

### POWER

Standard power sources (electric and combustion engine)	1) Electric: 230 V, 12,9 A, 2,2 kW
Optional power source	Diesel: Hatz 1B30 (5,4 kW/7,3 hp)
Fuel tank capacity petrol engine	3,6 l
Fuel tank capacity Diesel engine	5,0 l



### STANDARDS COMPLIANCE

2006/42/EC-Machinery directive  
(Harmonised standard EN280:2001 + A2:2009); 2004/108/EC (EMC);  
2000/14/EC (Noise emission directive – outdoor)

\*optional