

Technical data

LEO 30T plus

TEUPEN[®]
...access redefined

since '77

PERFORMANCE

| | |
|---|-------------------|
| Working height, max. (300 kg / 400 kg) | 30,00 m / 27,00 m |
| Working height, max. (both sides narrow) | 25,00 m |
| Platform height (300 kg / 400 kg) | 28,00 m / 25,00 m |
| Platform height, max. (both side narrow) | 23,00 m |
| Horizontal outreach, max. (400 kg) | 12,70 m |
| Horizontal outreach, max. (300 kg) | 14,00 m |
| Horizontal outreach, max. (80 kg) | 17,00 m |
| Horizontal outreach, max. (both sides narrow) | 14,50 m |
| Platform capacity, max. | 400 kg |
| Platform capacity, max. (both sides narrow) | 250 kg |
| Jib, movable | 180 ° |
| Platform, rotatable | 180 ° |
| Turntable rotation, max. | 450 ° |
| To be jacked up on ground slope of | 16,7 ° / 30,0 % |
| Track drive, height- and width-adjustable | 24 / 22 cm |
| Gradeability, max. | 16,7 ° / 30,0 % |
| Slope angle, max. | 21,0 ° / 38,0 % |
| Travel speed, max. | 3,0 km/h |

MEASUREMENTS*

| | |
|---|-----------------|
| Platform (height) (A) | 1,10 m |
| Platform (length) (B) | 1,20 m |
| Platform (width) (C) | 0,80 m |
| Length (D) | 7,70 m |
| Length without platform (E) | 7,50 m |
| Height (F) | 1,98 m |
| Width, min. (G) | 1,58 m |
| Ground clearance, max. (H) | 0,43 m |
| Track (length x width) (I) | 1,92 x 0,25 m |
| Outrigger footprint both side wide (length) (J) | 5,51 m |
| Outrigger footprint both side wide (width) (K) | 5,60 m |
| Outrigger footprint one side narrow (length) (L) | 7,55 m |
| Outrigger footprint one side narrow (width) (M) | 4,30 m |
| Outrigger footprint both sides narrow (width) (N) | 2,99 m |
| Outrigger plate (length x width) | 0,31 m x 0,22 m |

WEIGHT*

| | |
|--------------------------------------|------------------------|
| Total weight | 4500 kg |
| Live load in travelling position | 4,10 kN/m ² |
| Live load in working position | 1,70 kN/m ² |
| Point load per outrigger plate, max. | 32,00 kN |

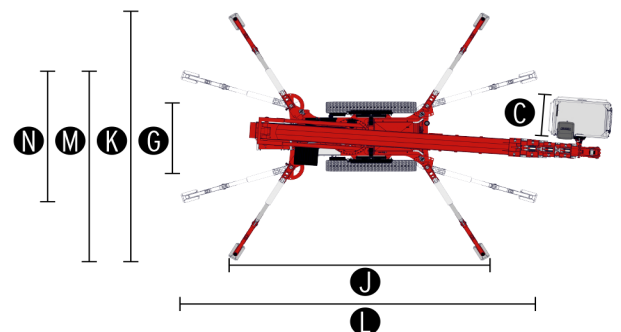
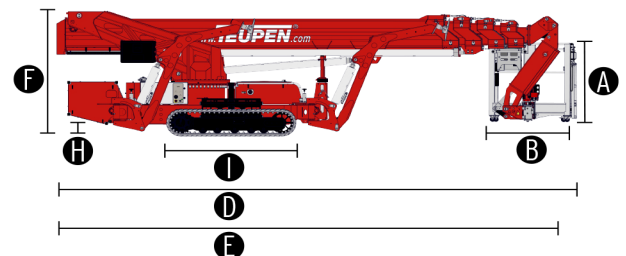
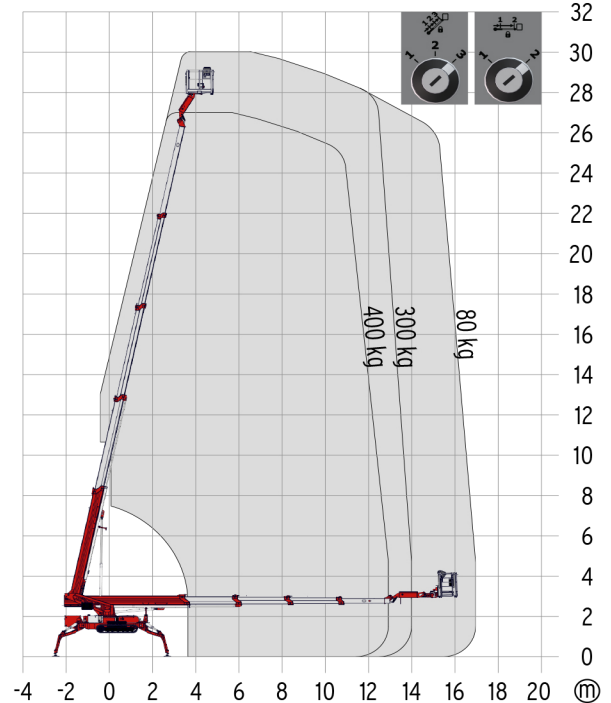
POWER SOURCES

Standard power sources:

| | |
|------------------------------------|---------------------------------|
| ■ Electric motor | (230 V, 12,9 A, 2,2 kW) |
| ■ Combustion engine (Diesel) | Kubota D902 (16,1 kW / 21,6 hp) |
| Fuel tank capacity (Diesel engine) | 39,0 l |

POWER SUPPLY

| | |
|------------------------|--------------|
| Electric current, max. | 230 V / 16 A |
|------------------------|--------------|



STANDARDS

2006/42/EG-Machinery directive
(Harmonised standard EN280:2016); 2004/108/EG (EMV);
2000/14/EG (Noise emission directive)

* The technical data may deviate +/- 3 % from the specified values.
* Weight and dimensions may vary depending on options and accessories.